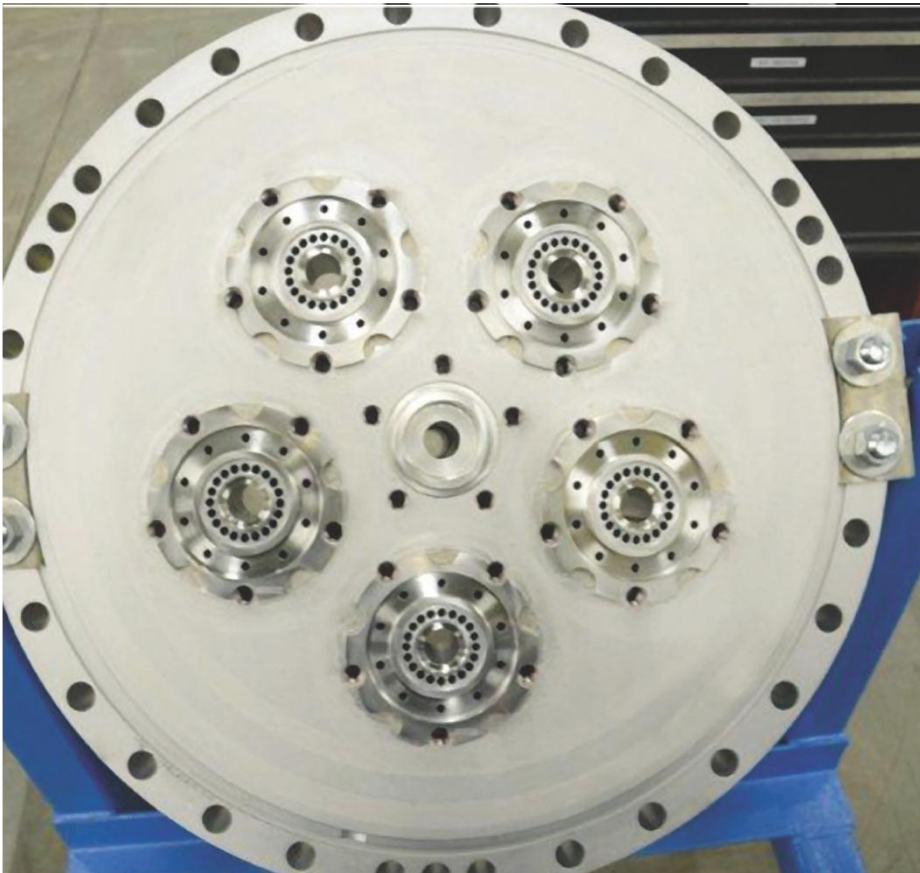
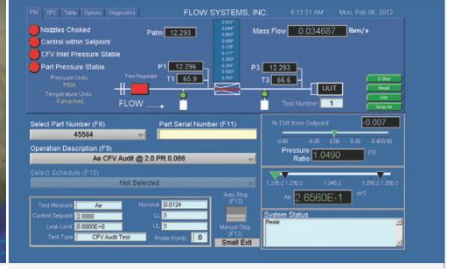


ICS

INTEGRATED COMBUSTION SOLUTIONS



Integrated Combustion Solutions (ICS) is a manufacturing and service center of excellence located in Duncan/Greenville, South Carolina. We focus on being a solutions provider to our customers in the repair and overhaul of IGT combustion components, assemblies and systems. ICS repairs and produces high-end assemblies/sub-assemblies that require complex specialized materials and processes. Our emphasis on design to manufacture, assembly and test, utilizing lean/co-location manufacturing has enabled quick turn times as well as world-class quality. ICS integrates the complete value chain to function as one in supporting our customers. We are uniquely customer-focused and driven to meet your specific needs. We listen (voice of the customer) and develop solutions based on individual requirements while providing the customer with the best value solution.



Services

- Fuel nozzle repair, overhaul and new manufacture
 - 7FA 2.6 /6FA 2.0 /7EA & 6B DLN-1 /MNQC / Std Combustion
 - Cleaning
 - Inspection
 - Repairs
 - Replacement parts
- Combustion support including NDT and fow testing
- Field Services support including remote fow testing

Why choose ICS?

- Experience – Industry leader in combustion development and manufacturing
- One stop shop – Integrate with industry-leading "Technology Partners" to provide a full scope of services from one provider
- Reduced lead times and costs – Lead times 50% faster on average and costs 30% lower on average using Lean/Co-Location Manufacturing
- Quality – World class through ICS developed and controlled manufacturing processes that are repeatable
- Open shop – Interactive to educate customers on products and repairs
- Credibility – Proven record of executing commitments and exceeding expectations
- Best value solution – quality, delivery and price

Product Qualification and Validation

- Product qualification records-frozen process
- Each product is qualified by each process step
- Measure and scan parts
- Part sectioning
- Raw material validation
- Integrated vendor/engineering/manufacturing meeting to review product for manufacturability and best available processes
- Pre-build of qualification pieces – component parts machined/cast/forged
- Special process qualification and validation
- Non-destructive testing of joined parts
- Destructive testing of joined parts
- Manufacture complete assembly
- Complete dimensional inspection on all pieces
- Non-destructive testing of complete assembly
- Flow validation of assembly
- Destructive testing of complete assembly

Core Processes

- Flow Testing (ISO & AS-In Process)
 - Air & liquid
- Pressure Test (ISO & AS-In Process)
 - Braze & Heat Treat (ISO, AS & NADCAP)
- Welding (ISO & AS)
 - Electron Beam Welding (ISO & AS)
 - TIG (ISO-In Process)
- Non Destructive Testing (ISO, AS & NADCAP)
 - Digital X-Ray, Fluorescent Penetrant, Red Dye, Eddy Current
- Machining (ISO & AS) – Conventional
 - Machining (ISO & AS) – CNC and Conventional
 - Chemical Clean (ISO)
- EDM (ISO & AS)
 - Fast Hole and Wire

